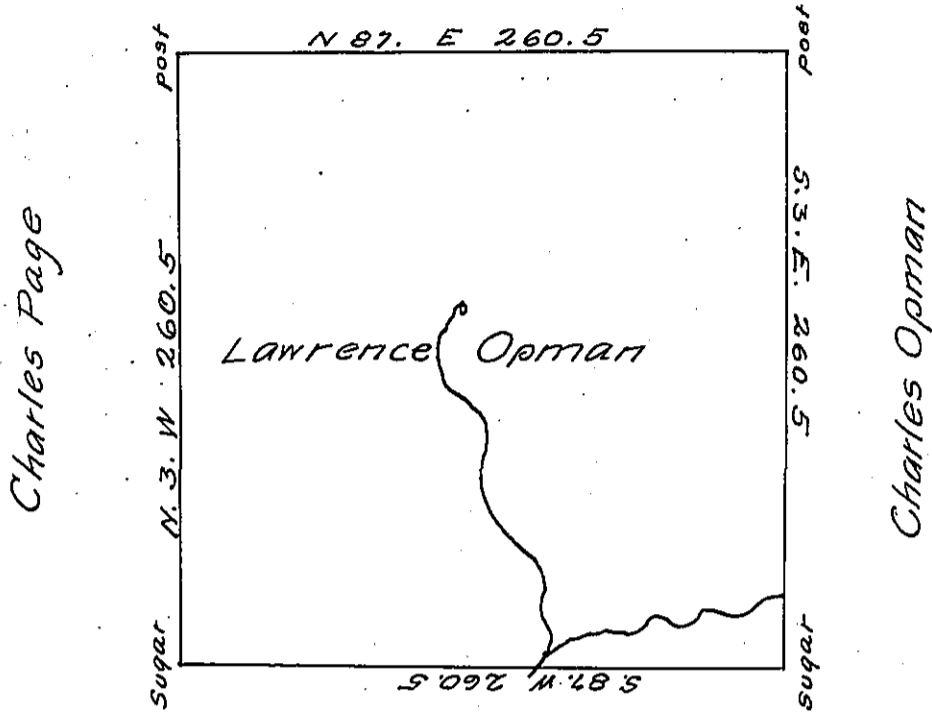


Martin Ord



Charles Page

Charles Opman

Henry Page

Situate on the Waters of Beaver Creek in District No 3 Allegany County
 Containing 400 ^{Ac} 16 ^{P²} and allowance. Survey'd the 30 May 1795 in
 pursuance of a Warrant granted Lawrence Opman 21 April 1794

Ben. Stokely D.S.

Dan! Brodhead Esq. S.G.

Cool Spring Township Mercer County

IN TESTIMONY that the above is a copy of the original remaining on file in
 the Department of Internal Affairs of Pennsylvania, made
 conformably to an Act of Assembly approved the 16th day of
 February, 1833, I have hereunto set my Hand and caused
 the Seal of said Department to be affixed at Harrisburg,
 this twenty-fourth day of May 1906

George D. Brown
 Secretary of Internal Affairs.